

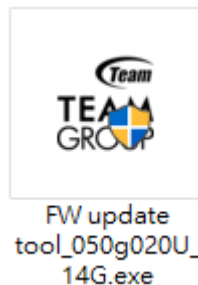
TEAMGROUP Gen5 SSD IG5666 FW Update operating instruction

Notice :

- ※ Only products the product model is GA PRO with IG5666 controllers are supported for firmware updates, and only one SSD can be updated at a time.
- ※ Please confirm the product model is GA PRO with IG5666 controllers and firmware version is 050g0554(MODEL NAME=T-FORCE TM8FFJ001T & T-FORCE TM8FFJ002T) , which can be updated to 050g05AS.
- ※ Data in SSD may be lost during FW update. Please backup All data in SSD first.
- ※ The update FW operation can only be performed on the Windows 10/11.

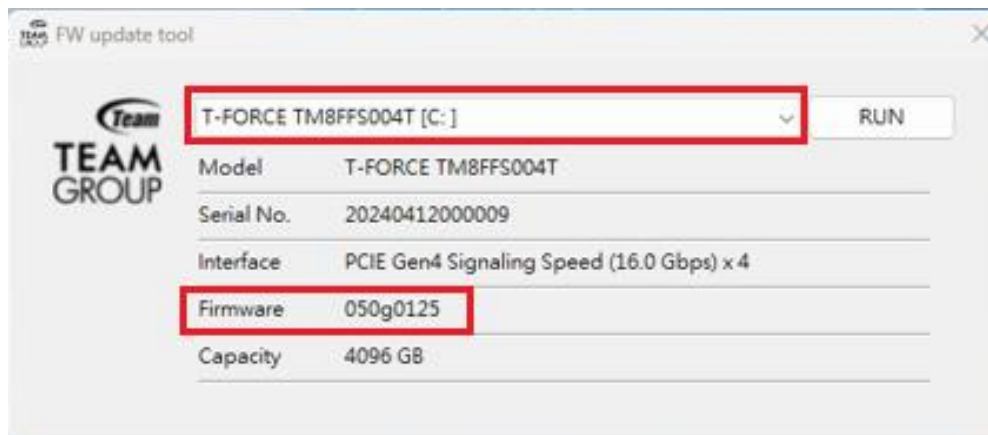
1. Firmware Update Process.

1-1. Execute the “FW update tool”.

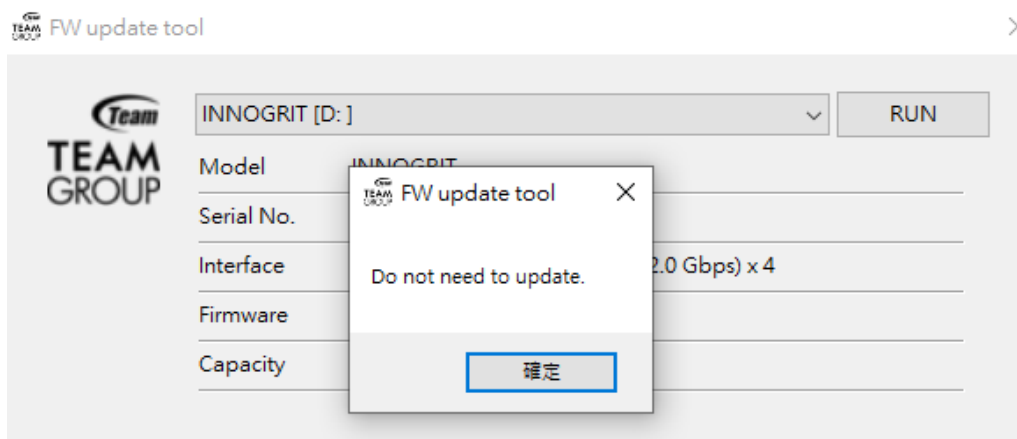


1-2. Select the SSD device to be updated and confirm the old firmware version.

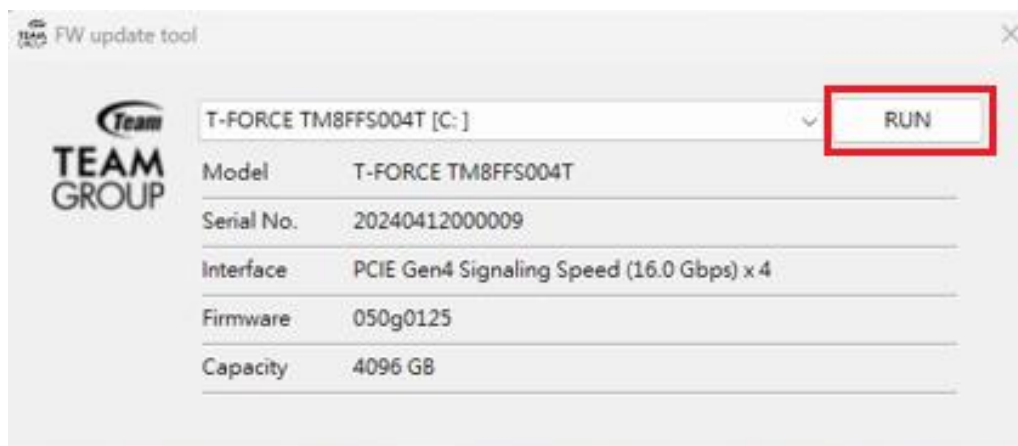
TEAMGROUP Gen5 SSD IG5666 FW Update operating instruction



* If the FW is already the latest version or the FW version is not in the supported update list, the program will prompt that no update is required.

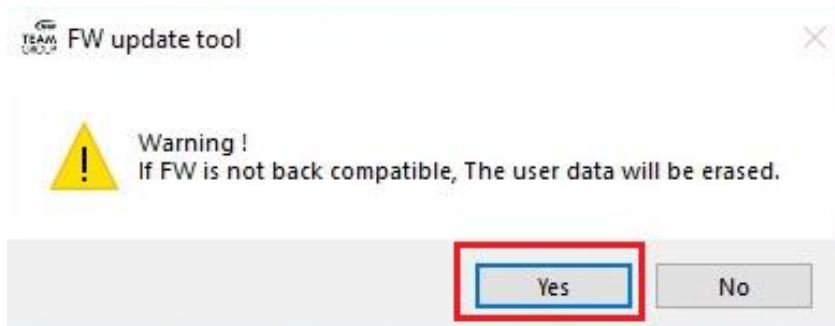


1-3. Click "RUN" to start updating FW.

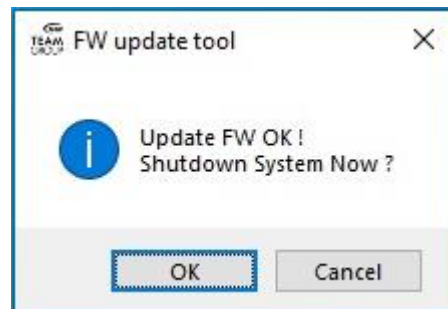


TEAMGROUP Gen5 SSD IG5666 FW Update operating instruction

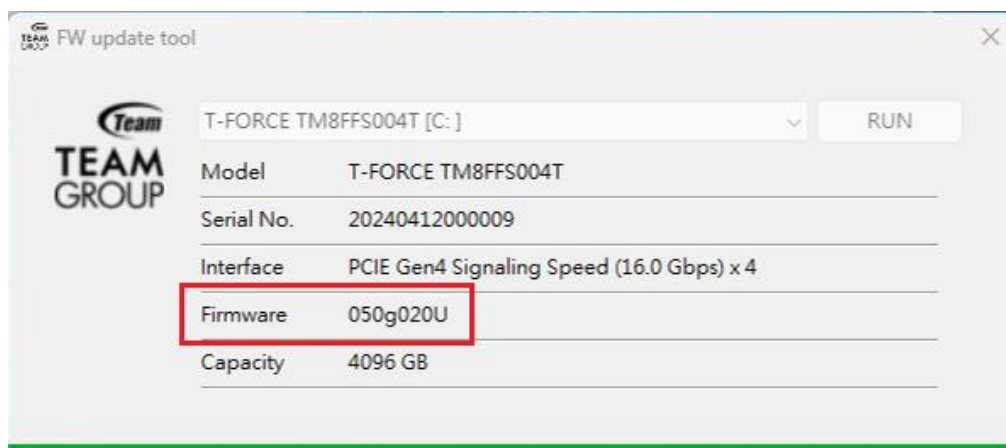
1-4. Click "Yes" to start updating FW.



1-5. Update FW completed. Click "OK" to Shutdown your computer.



1-6. Check whether the firmware version of the SSD is the new version FW.




TEAMGROUP Gen5 SSD IG5666 FW Update operating instruction

2. Firmware version confirmation:

2-1. Please go to the following path to download and install the Team Group S.M.A.R.T tool to check your SSD firmware version.

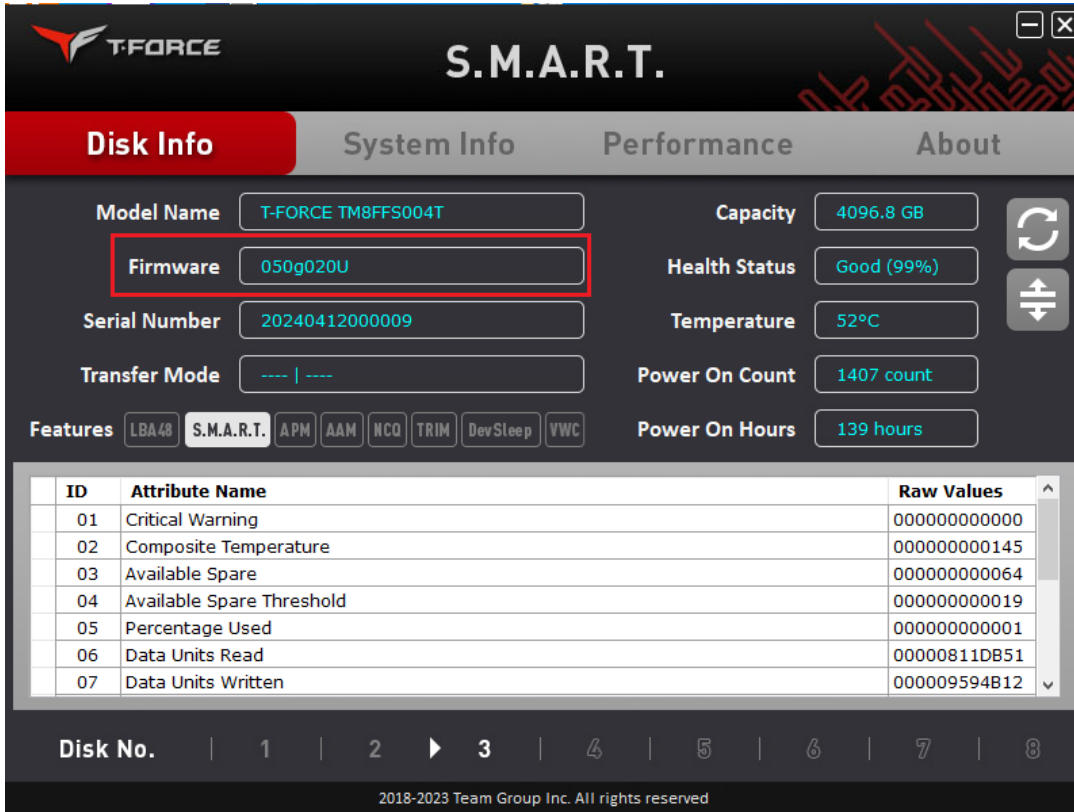
- **Team Group S.M.A.R.T. Tool :**

<https://support.teamgroupinc.com/en/support/download.php>

SSD Product	SSD S.M.A.R.T. TOOL	v0.1.6.2	2023-06-19	9.3MB	
-------------	---------------------	----------	------------	-------	---------------------------------------------------------------------------------------

2-2. Use Team Group SMART Tool to confirm whether the FW version of the updated SSD is the new version FW.

TEAMGROUP Gen5 SSD IG5666 FW Update operating instruction



The screenshot shows the T-FORCE S.M.A.R.T. utility interface. The 'Disk Info' tab is selected, displaying various disk attributes. The 'Firmware' field is highlighted with a red box. Below the main information, there is a table of attributes with 7 rows. The table has three columns: ID, Attribute Name, and Raw Values. The attributes listed are Critical Warning, Composite Temperature, Available Spare, Available Spare Threshold, Percentage Used, Data Units Read, and Data Units Written. At the bottom, there is a navigation bar with disk numbers 1 through 8, and a footer with the copyright notice '2018-2023 Team Group Inc. All rights reserved'.

ID	Attribute Name	Raw Values
01	Critical Warning	000000000000
02	Composite Temperature	00000000145
03	Available Spare	000000000064
04	Available Spare Threshold	000000000019
05	Percentage Used	000000000001
06	Data Units Read	00000811DB51
07	Data Units Written	000009594B12

Notice: If you encounter issues while updating the SSD FW, please contact our sales or customer service team directly for assistance.